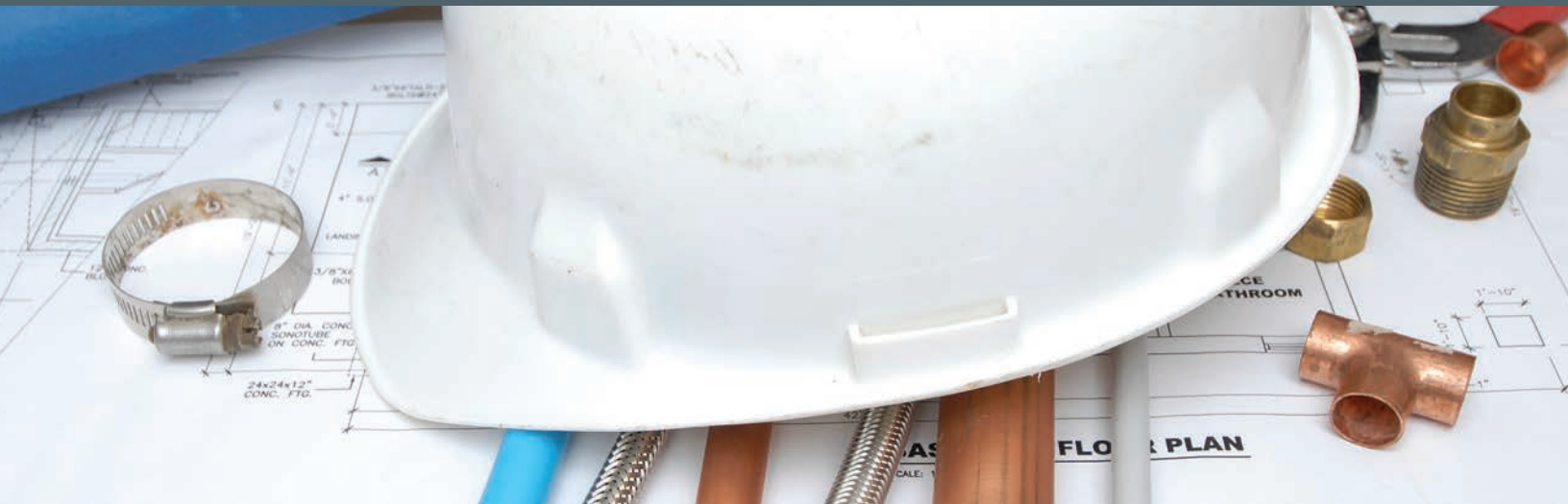


MANAGING LEGIONELLA CONSTRUCTION RISKS



PREVENT CONSTRUCTION RISKS

SPL'S EVIDENCE-BASED SERVICES

Protect your occupants and business from Legionella and waterborne pathogens during construction, start up and maintenance.

Phase 1: Planning

Take special consideration for how construction impacts building water systems and growth of Legionella and establish precautions during design, construction and commissioning.

Onsite Risk Assessments

SPL addresses risks associated with transmission of Legionella due to performance of construction from the beginning of the planning process and through each phase of development.

Phase 2: Design

Addressing how construction could impact water quality and affect the growth of Legionella and waterborne pathogens in your water system during the design phase could reduce potential change orders during construction.

Document Review

SPL reviews construction documents to assess impact of building design on water quality.

Phase 3: Construction

Oversight during construction ensures work is completed per the design and recommendations are implemented to minimize the spread of Legionella.

Legionella Oversight

SPL provides oversight through all phases of construction to minimize risks associated with the transmission of Legionella.

Phase 4: Commissioning

For widespread water service interruptions or new construction work, include disinfection, water flow and temperature checks, sampling and Legionella culture, and continual movement of water until the building is occupied.

Disinfection Procedures and Legionella Sampling

SPL provides comprehensive, project specific commissioning disinfection procedures for construction of new water systems and onsite monitoring and sampling for Legionella and other waterborne pathogens.

Contact

Kevin Merritt, MSE
Director, SPL Consulting Services
kmerritt@specialpathogenslab.com

Janet E. Stout, PhD
President & Director
jstout@specialpathogenslab.com



877-775-7284



WWW.SPECIALPATHOGENSLAB.COM